



BRIDGEVIEW
TOWNHOMES

[FOXWOOD-HOMES.COM](https://foxwood-homes.com)



Imagine
a world to be discovered...



BRIDGEVIEW
TOWNHOMES

FOXWOOD-HOMES.COM



BRIDGEVIEW
TOWNHOMES

Coastal living. Convenient lifestyle.

[FOXWOOD-HOMES.COM/BRIDGEVIEW](https://foxwood-homes.com/bridgeview)

[FOXWOOD-HOMES.COM](https://foxwood-homes.com)

AMAZING AMENITIES

With over 120 hectares of parkland, 33 parks, 45 kilometers of recreation and nature trails, kilometers of waterfront parks and access points, playgrounds and splash pads, sports fields, conservation areas, a concrete skate park and a dog park, Fort Erie offers opportunities to suit every recreation and leisure need.

Crystal Beach Waterfront parks.

Located on the shores of Lake Erie, this popular family park features scenic vistas, a Corporal Albert Storm fire truck themed playground, picnic areas and a boat launch.

Only 15 minutes from your new home!

Restored in 2011, this National Historic Site **The Point Abino Light Tower** sits proudly on the rocky north shore of Lake Erie at the southern tip of Point Abino peninsula west of Crystal Beach, Ontario, Canada.

Only 25 minutes from your new home!



BRIDGEVIEW
TOWNHOMES

[FOXWOOD-HOMES.COM](https://foxwood-homes.com)

EVERYDAY ESCAPE

Discover Bridgeview by Foxwood Homes and escape the fast pace hectic lifestyle of city living. Experience an envious lifestyle that feels exclusive only to you.

Surrounded by nature, crisp fresh air and beautiful unspoiled shores with crystal clear water. Lakeside living at Bridgview is a perfect backdrop for you to relax and enjoy your newfound exclusive lifestyle.

Fishing, boating, sailing, swimming, bird watching, hiking, jogging are only few fun daily activities you can do only minutes from your new home. Or just simply have a seat on a bench at a nearby waterfront park and enjoy the beautiful sunset.



BRIDGEVIEW
TOWNHOMES

[FOXWOOD-HOMES.COM](https://foxwood-homes.com)

COASTAL CONVENIENCE

Not only will you enjoy the envious coastal living at Bridgeview, you will also enjoy the convenience of having all the amenities your heart desires only minutes from your doorstep.

Regardless if you're looking for your first new home. Or you're looking for a safe community to place down your roots with your young family. Or maybe you are thinking of quieter days ahead and are looking for that picture perfect community living. You will find it all at Bridgeview.

Discover Bridgeview. A safe community only steps to restaurants, shopping, parks, schools, trails and so much more.



BRIDGEVIEW
TOWNHOMES

[FOXWOOD-HOMES.COM](https://foxwood-homes.com)

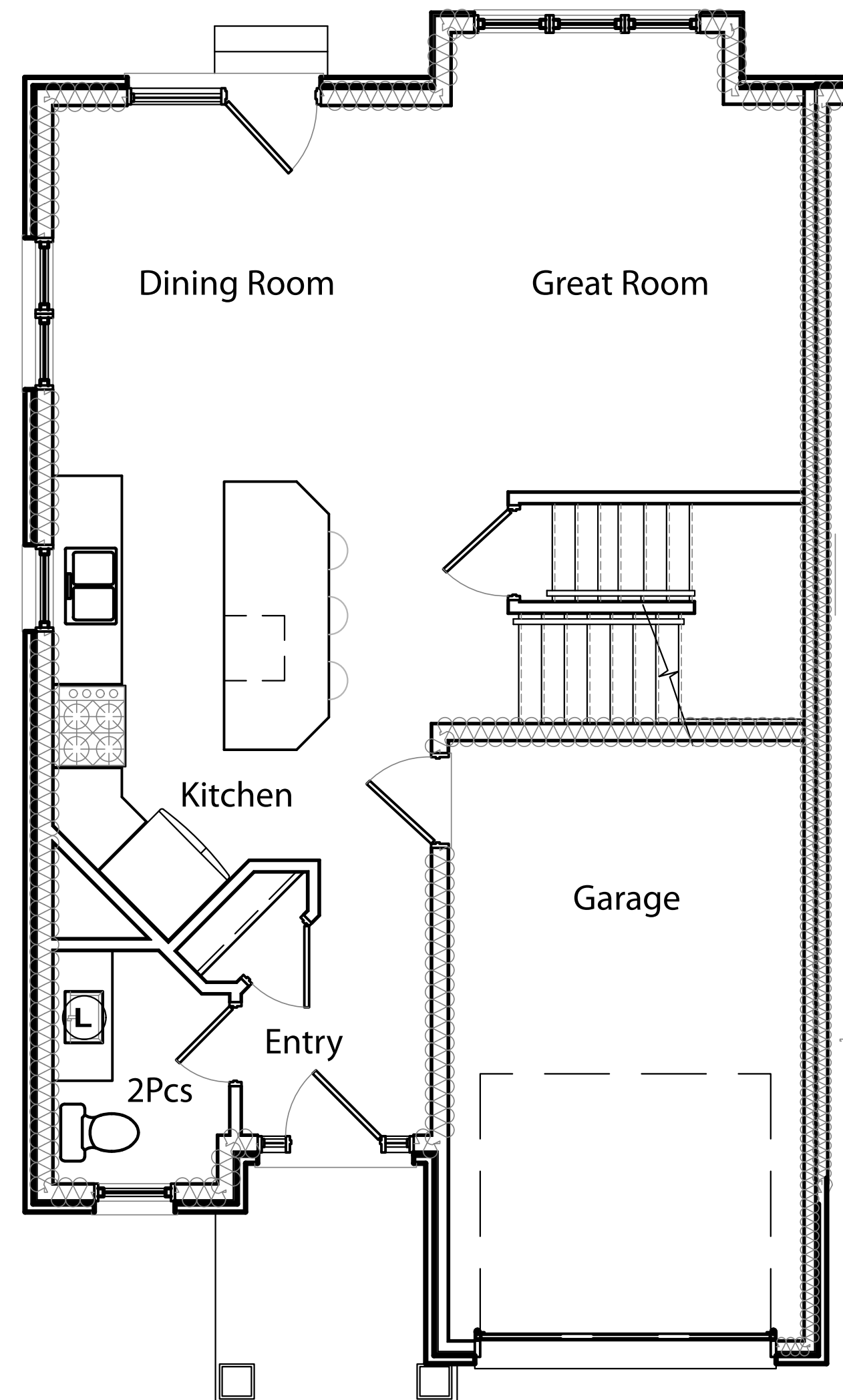
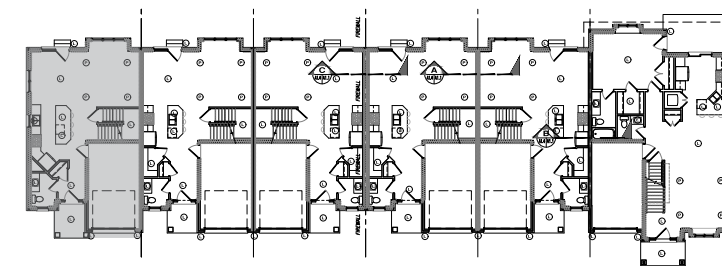
DUTCHESS

1590 SQ.FT.

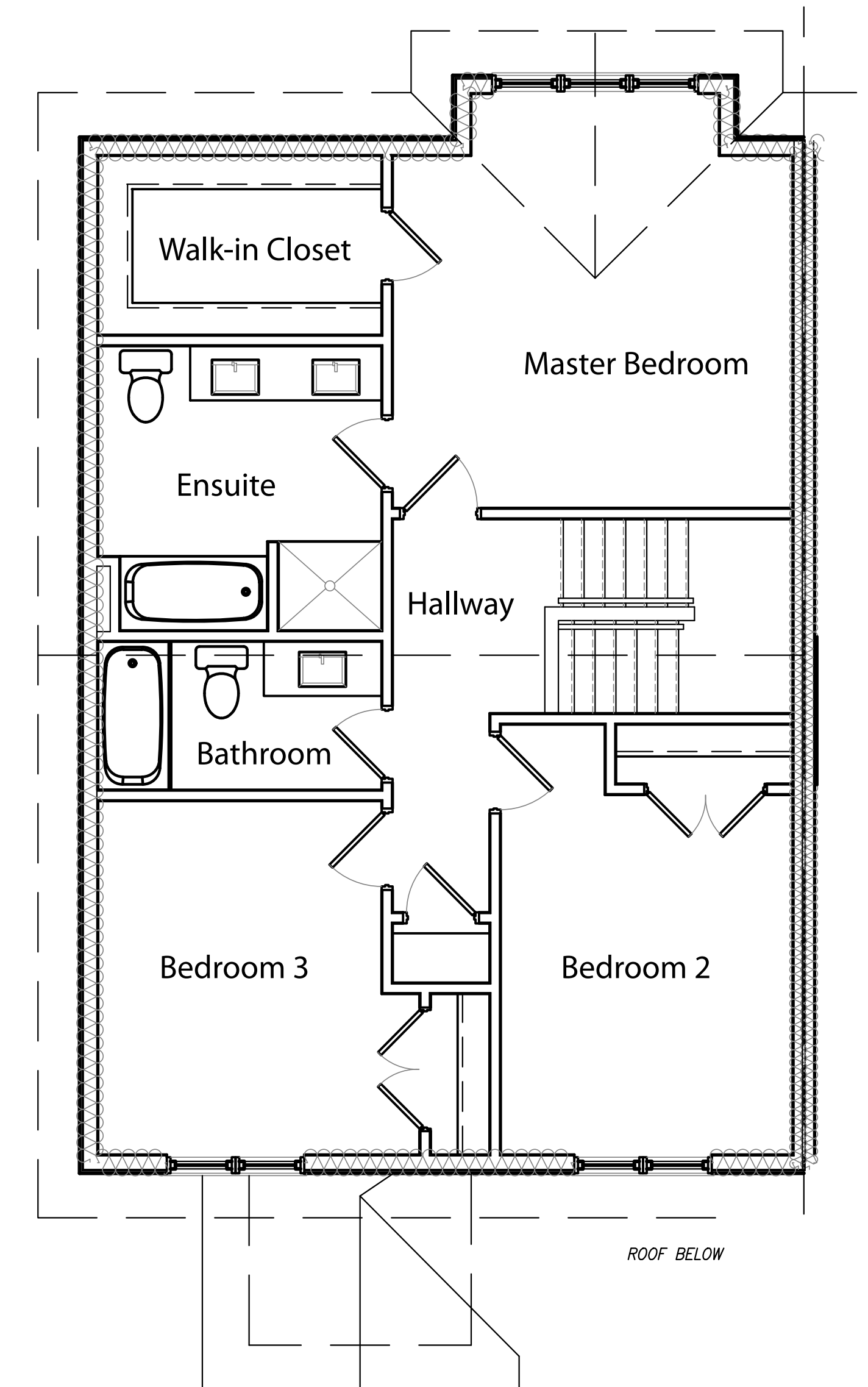
3 BEDROOMS | 2.5 BATHROOMS

These are our 2 story end units. Each of the Dutchess units has 3 bedrooms on the second floor and 2 full baths. The master has an ensuite and large walk in closet. A laundry closet on the second floor adds convenience to daily chores.

The main floor of the home has an open concept layout with a large kitchen island for day to day family use and serves as a central hub to the home. Each unit has a 1 car attached garage and numerous upgrades included in the purchase price.



MAIN FLOOR



SECOND FLOOR

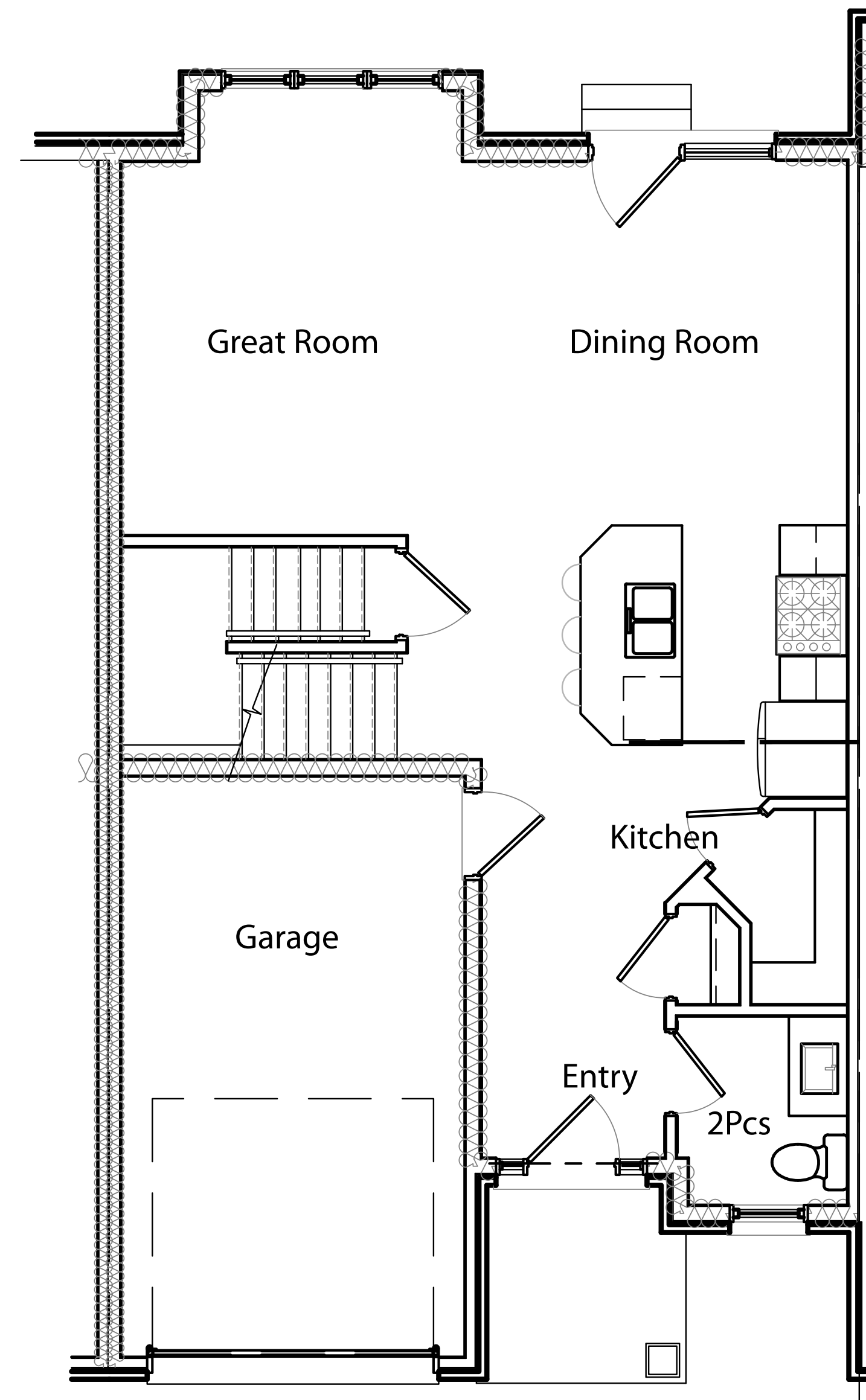
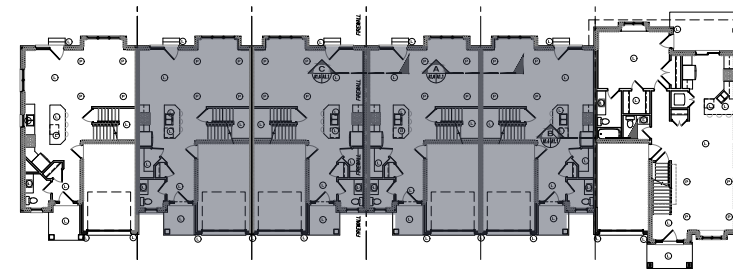
Rendering is artist's concept of the completed home and is subject to change. Illustration may show optional colours and optional features which may not be included in the base price. Landscape areas and plantings are concepts only and may vary from finished landscape. Plans and specifications are subject to change without notice. Actual usable floor space may vary from stated floor area. See sales representatives for more information. E. & O. E.

MONARCH

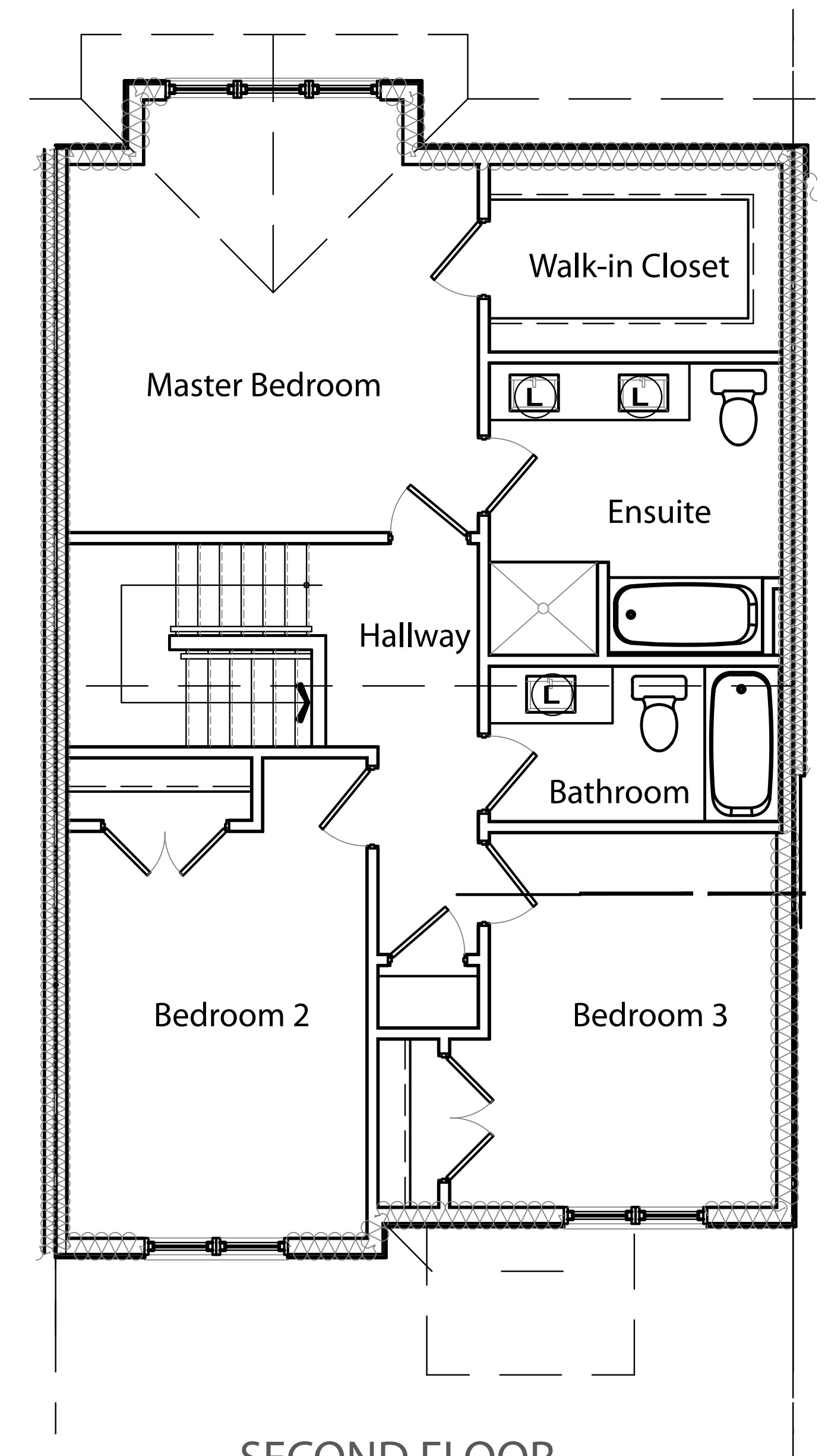
1543 SQ.FT.

3 BEDROOMS | 2.5 BATHROOMS

With 9 units to choose from this is our most affordable layout. These units all have 3 bedrooms and 2.5 bathrooms. The second floor offers a large master bedroom with 4 piece ensuite and walk-in closet. Two additional bedrooms, a full bath and laundry closet complete the second floor. The main floor has a similar family friendly layout to the Dutchess. A full basement and attached 1 car garage complete the package.



MAIN FLOOR



SECOND FLOOR

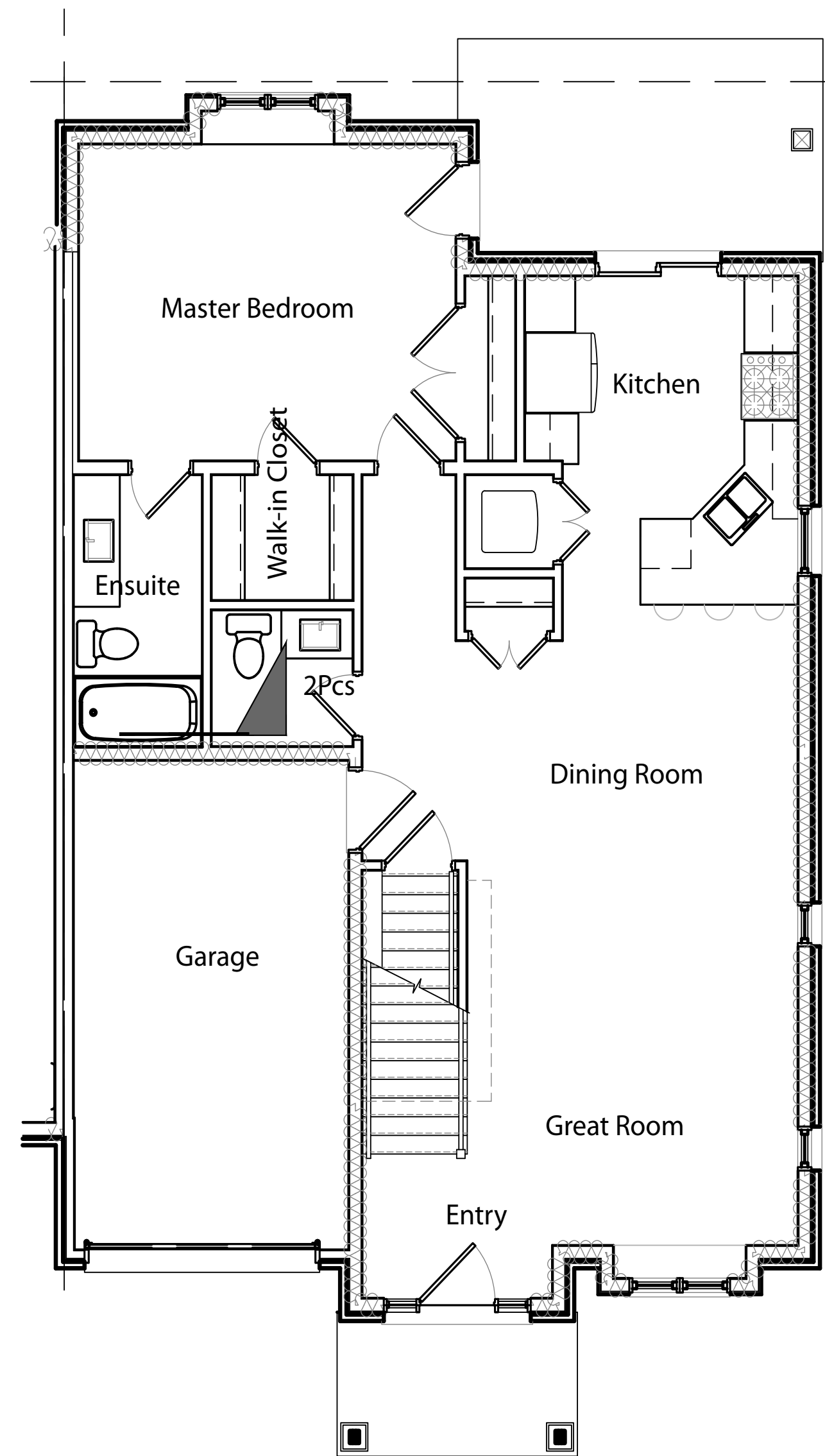
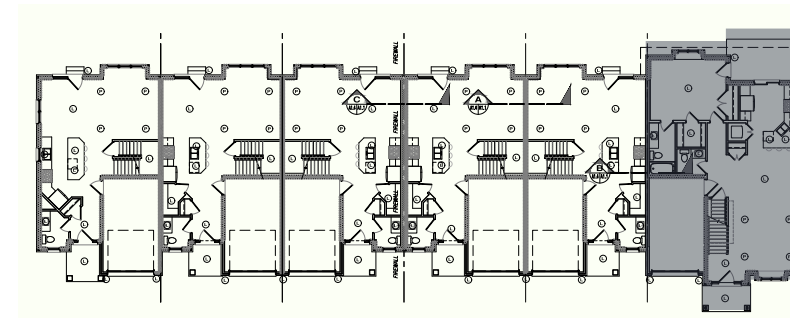
Rendering is artist's concept of the completed home and is subject to change. Illustration may show optional colours and optional features which may not be included in the base price. Landscape areas and plantings are concepts only and may vary from finished landscape. Plans and specifications are subject to change without notice. Actual usable floor space may vary from stated floor area. See sales representatives for more information. E. & O. E.

KINGSTON

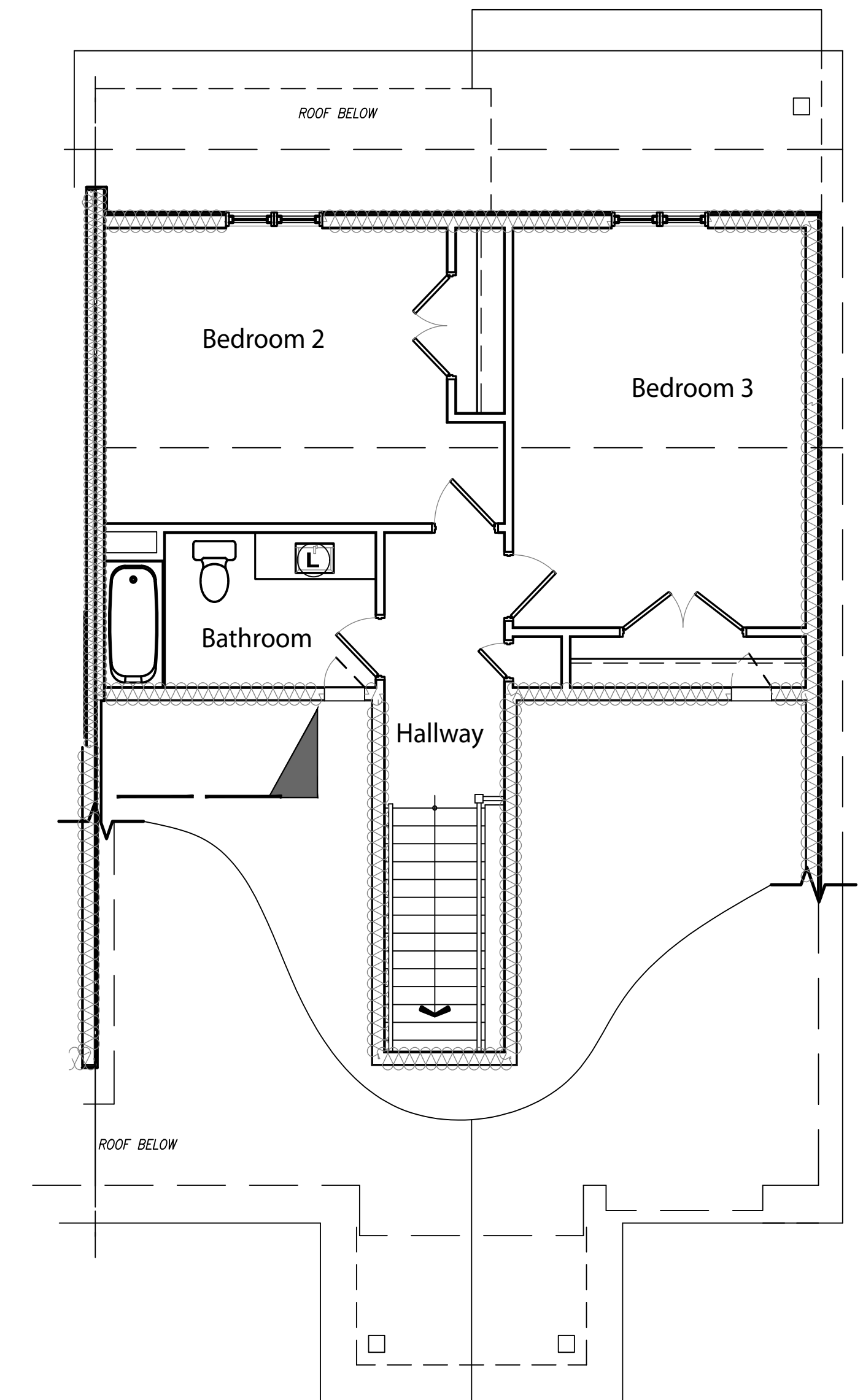
1646 SQ.FT.

3 BEDROOMS | 2.5 BATHROOMS

Our largest and most unique home layout. This plan features an open concept main floor with eat-in kitchen and peninsula with breakfast bar. Open sight lines and large windows allow for lots of natural light in this space of the home. The main floor is completed with a large main floor master bedroom equipped with a walk in closet and 4 piece ensuite. The master bedroom also opens directly to a covered rear veranda. The main floor is complete with a 2 piece bathroom. The second floor of this home has 2 large bedrooms and a full bathroom to service this private space.



MAIN FLOOR



SECOND FLOOR

INTERIOR FEATURES

What is included:

Professionally designed interiors using quality materials with choice of two interior colour palettes which include:

Quality vinyl wood plank throughout the main floor, carpet & underlay on main stairs and second floor and ceramic tile flooring in upper bathroom areas.

Two paint colours

Quality cabinets & quartz countertops with undercounter sinks

Textured ceilings throughout
9' ceilings on main floor and 8' on second floor
White acrylic one piece tub/shower surrounds, low flush toilets and Moen faucets finished in chrome
Standard colonial trim & interior doors with satin nickel door handles
Wire shelving in all closets (including 4 shelves in linen closets)
Satin nickel lighting package for all finished areas.

EXTERIOR FEATURES

What is included:

Poured Concrete Foundations
Professionally designed exteriors using quality material including brick veneer, vinyl siding, and 25 year asphalt shingles
Quality, energy efficient (Low E Argon filled) vinyl windows
Exterior steel clad doors
Insulated sectional steel garage door

Paved driveway with 12" x 12" paver sidewalk at front.
Fully sodded lot

Notes:

The vendor reserves the right to substitute any material of provide modifications to layouts as necessitated by construction techniques, building codes or availability of materials No alterations and/or deletions to the specifications shall be made by the purchaser Complete selection of colours are from the builders samples. Specifications are subject to change without notice. All exterior works completed within 1 year of closing. No additional landscaping or hardscaping included E & O insurance. See your sales professional for more information.





Discover

a lifestyle of opportunities



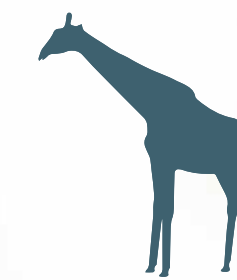
SHOPPING
2 MINUTES



PUBLIC SCHOOL
3 MINUTES



QEW ACCESS
2 MINUTES



SAFARI NIAGARA
14 MINUTES



NIAGARA FALLS
23 MINUTES



WEAVERLY BEACH
6 MINUTES



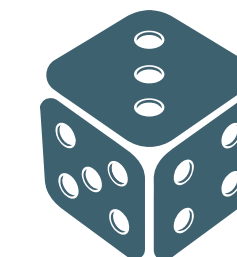
BOATING
19 MINUTES



RESTAURANTS
1 MINUTES



INTER. AIRPORT
(U.S.) 31 MINUTES



CASINO NIAGARA
25 MINUTES



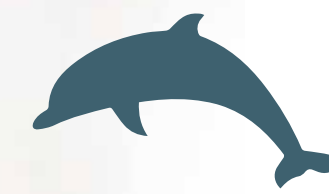
GOLF CLUB
6 MINUTES



PEACE BRIDGE
5 MINUTES



RACING TRACK
3 MINUTES



MARINELAND
22 MINUTES



LEISUREPLEX ARENA
6 MINUTES



BRIDGEVIEW
TOWNHOMES

FOXWOOD-HOMES.COM

LEGEND

- 1 Grocery
- 2 Retail
- 3 Dining & Entertainment
- 4 Education & Child Care
- 5 Health & Wellness



BRIDGEVIEW
TOWNHOMES

Our Location



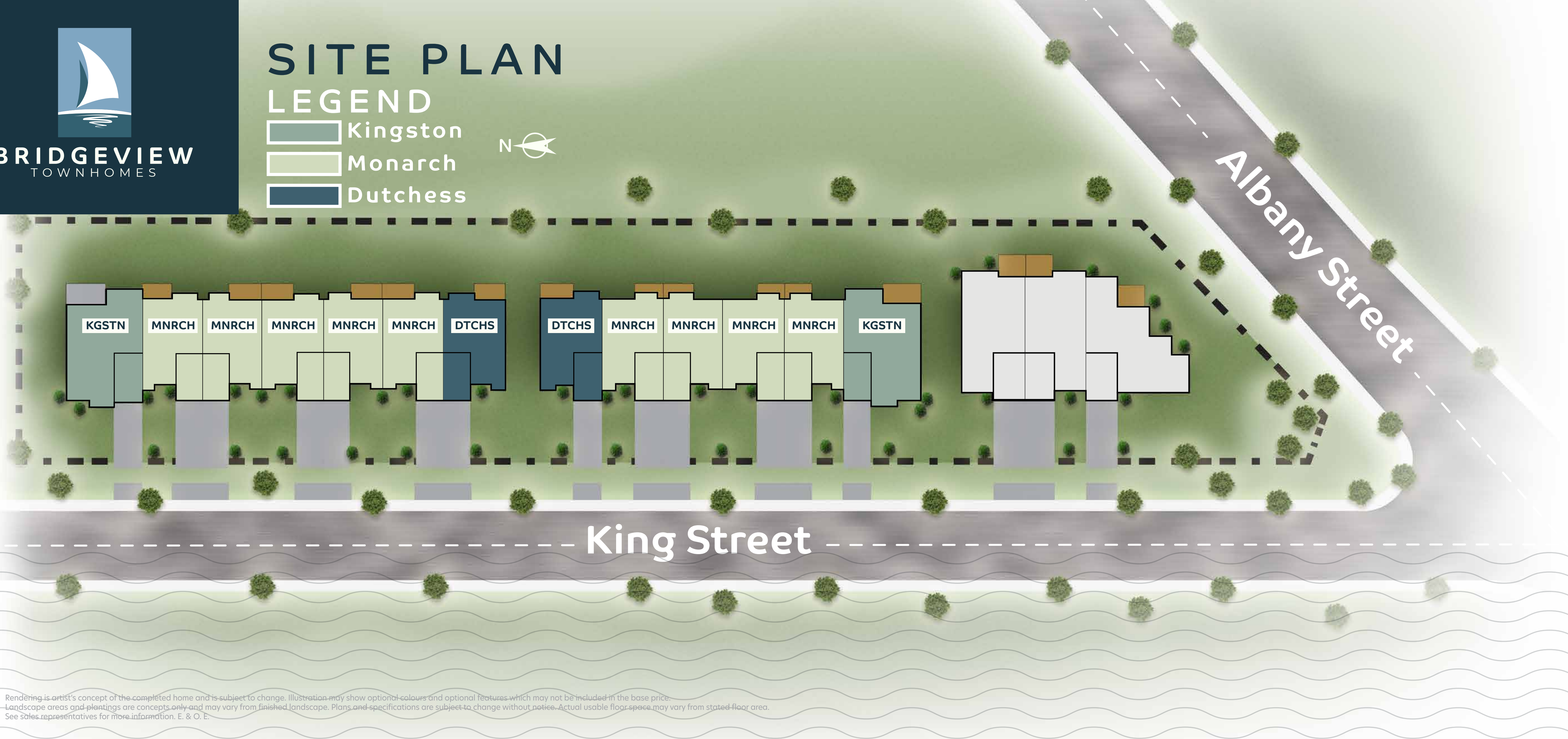


BRIDGEVIEW
TOWNHOMES

SITE PLAN

LEGEND

- Kingston
- Monarch
- Dutchess



Rendering is artist's concept of the completed home and is subject to change. Illustration may show optional colours and optional features which may not be included in the base price. Landscape areas and plantings are concepts only and may vary from finished landscape. Plans and specifications are subject to change without notice. Actual usable floor space may vary from stated floor area. See sales representatives for more information. E. & O. E.



BRIDGEVIEW
TOWNHOMES

FOXWOOD-HOMES.COM

VISIT US TODAY

Located at the corner of King and Albany Streets in Fort Erie, this site is just steps from the mouth of the mighty Niagara River and a short distance to shopping, dining and medical facilities and much more. Traveling out of town is simplified with quick and easy access to both the Peace Bridge to Buffalo, NY and the U.S.A or the Q.E.W. if your destination is Niagara and beyond.



BRIDGEVIEW
TOWNHOMES

MODEL HOME:

**8 King Street, Fort Erie,
Ontario L2A 6T1, Canada
(289) 876-8886**

FOR SALES INQUIRIES PLEASE CONTACT:

Stephen Oliver
Broker of Record
Coldwell Banker

Momentum Realty Brokerage
353 Lake Street St Catharines,
Ontario, L2N7G4

Office: 905-935-8001
Direct: 905-328-3786

stephen-oliver@coldwellbanker.ca
www.momentumrealty.ca



foxwood
Homes

FOXWOOD-HOMES.COM