

MONARCH

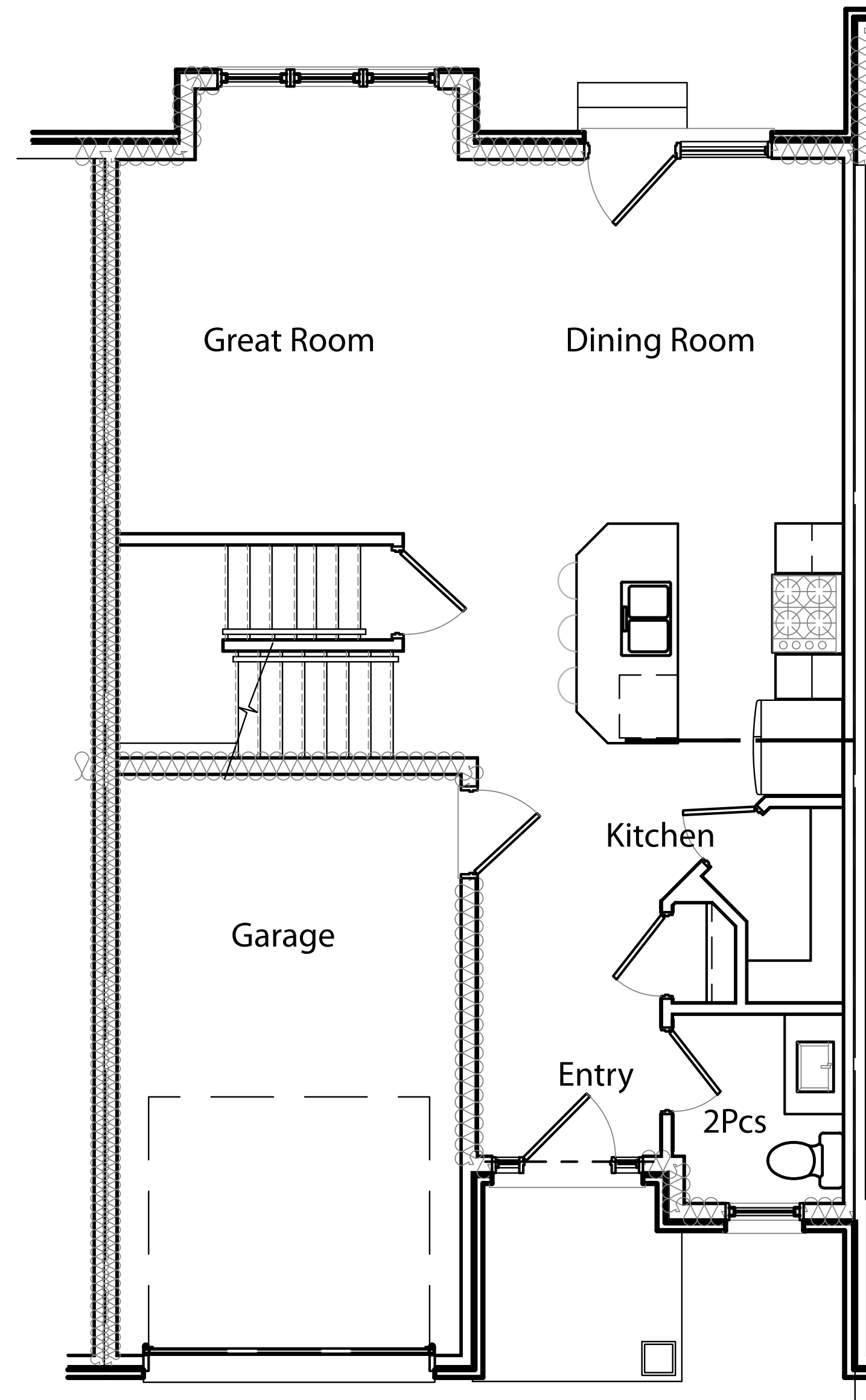
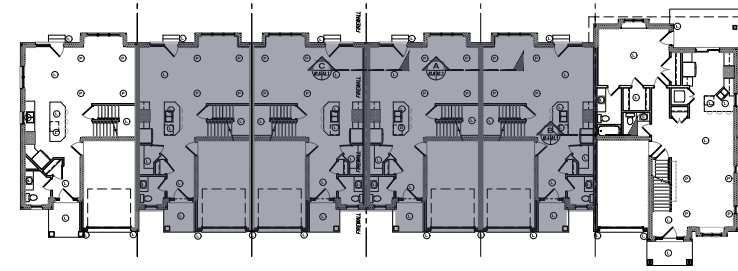
1543 SQ.FT.

3 BEDROOMS | 2.5 BATHROOMS

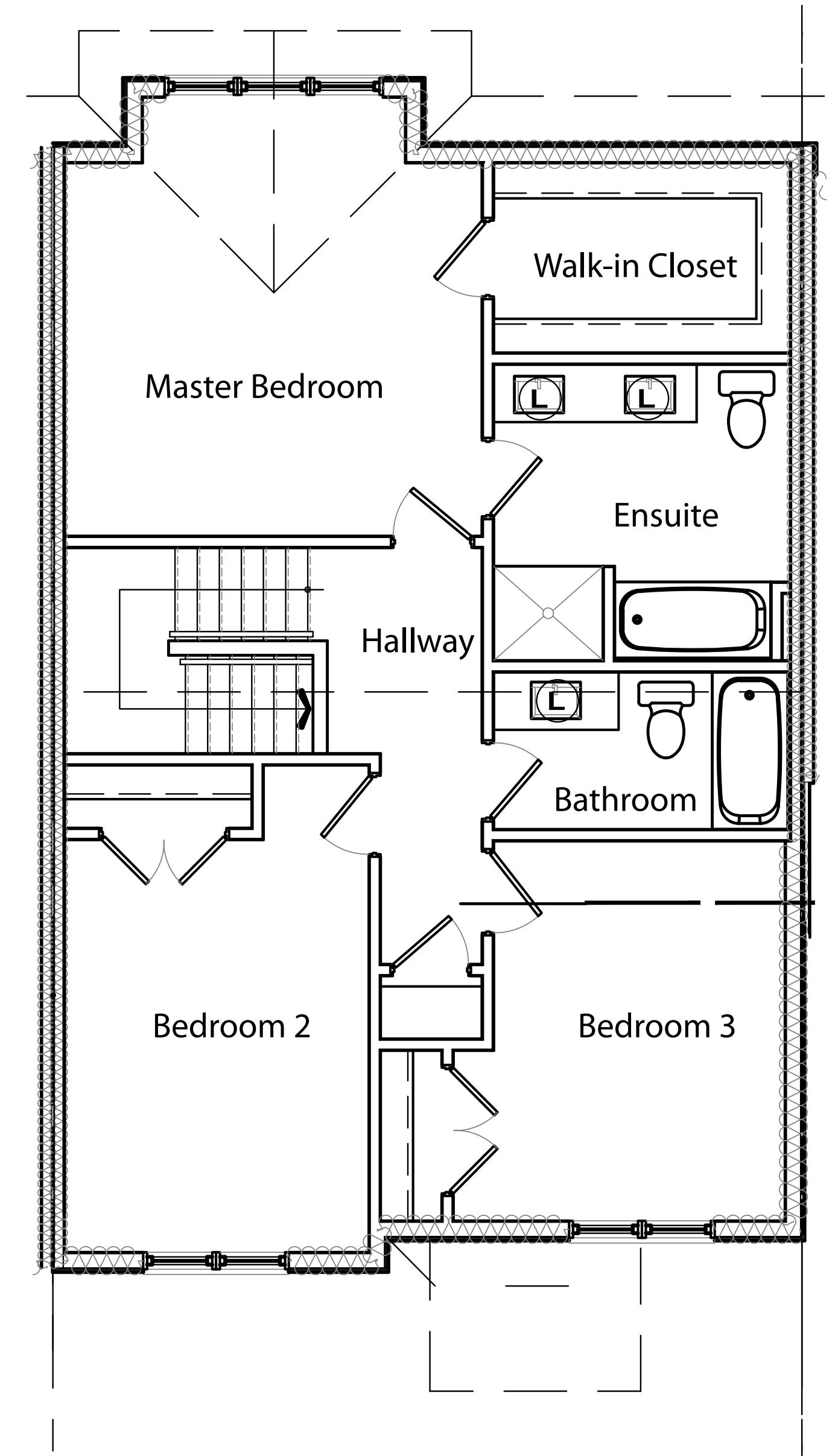
With 9 units to choose from this is our most affordable layout. These units all have 3 bedrooms and 2.5 bathrooms.

The second floor offers a large master bedroom with 4 piece ensuite and walk-in closet. Two additional bedrooms, a full bath and laundry closet complete the second floor. The main floor has a similar family friendly layout to the Dutchess.

A full basement and attached 1 car garage complete the package.



MAIN FLOOR



SECOND FLOOR

Rendering is artist's concept of the completed home and is subject to change. Illustration may show optional colours and optional features which may not be included in the base price. Landscape areas and plantings are concepts only and may vary from finished landscape. Plans and specifications are subject to change without notice. Actual usable floor space may vary from stated floor area. See sales representatives for more information. E. & O. E.